

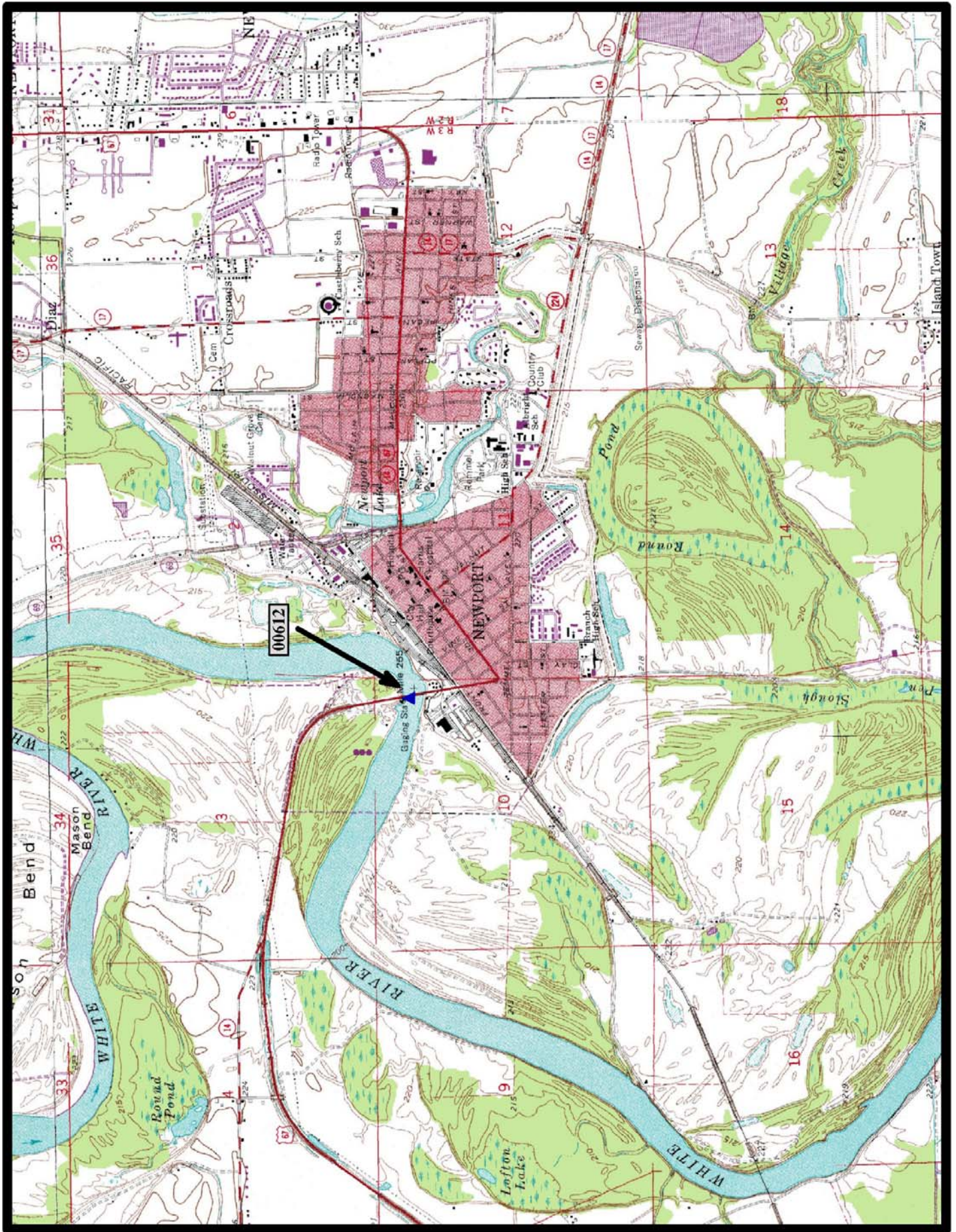
- ▲ In-Service Double Arch Thru Truss (2)
- ⊘ Demolished NR Double Arch Thru Truss (1)
- ◻ Preserved Double Arch Thru Truss (0)

## Double Arch Thru Truss Bridges





**HISTORIC BRIDGE #00612**  
**STATE HIGHWAY 367**  
**JACKSON COUNTY**  
**DOUBLE ARCH THRU TRUSS**  
**CROSSES - WHITE RIVER**  
**DATE OF CONSTRUCTION – 1930**  
**BUILDER - MISSOURI VALLEY BRIDGE & IRON COMPANY,**  
**LEAVENWORTH, KS**  
**HISTORIC BRIDGE INVENTORY DATE - 1987**  
**SHPO NUMBER – JA0051**  
**HAER NUMBER - AR-12**  
**DATE LISTED ON NATIONAL REGISTER - 4/9/1990**  
**LAT./LONG. 35:36:21.35, -91:17:19.37**

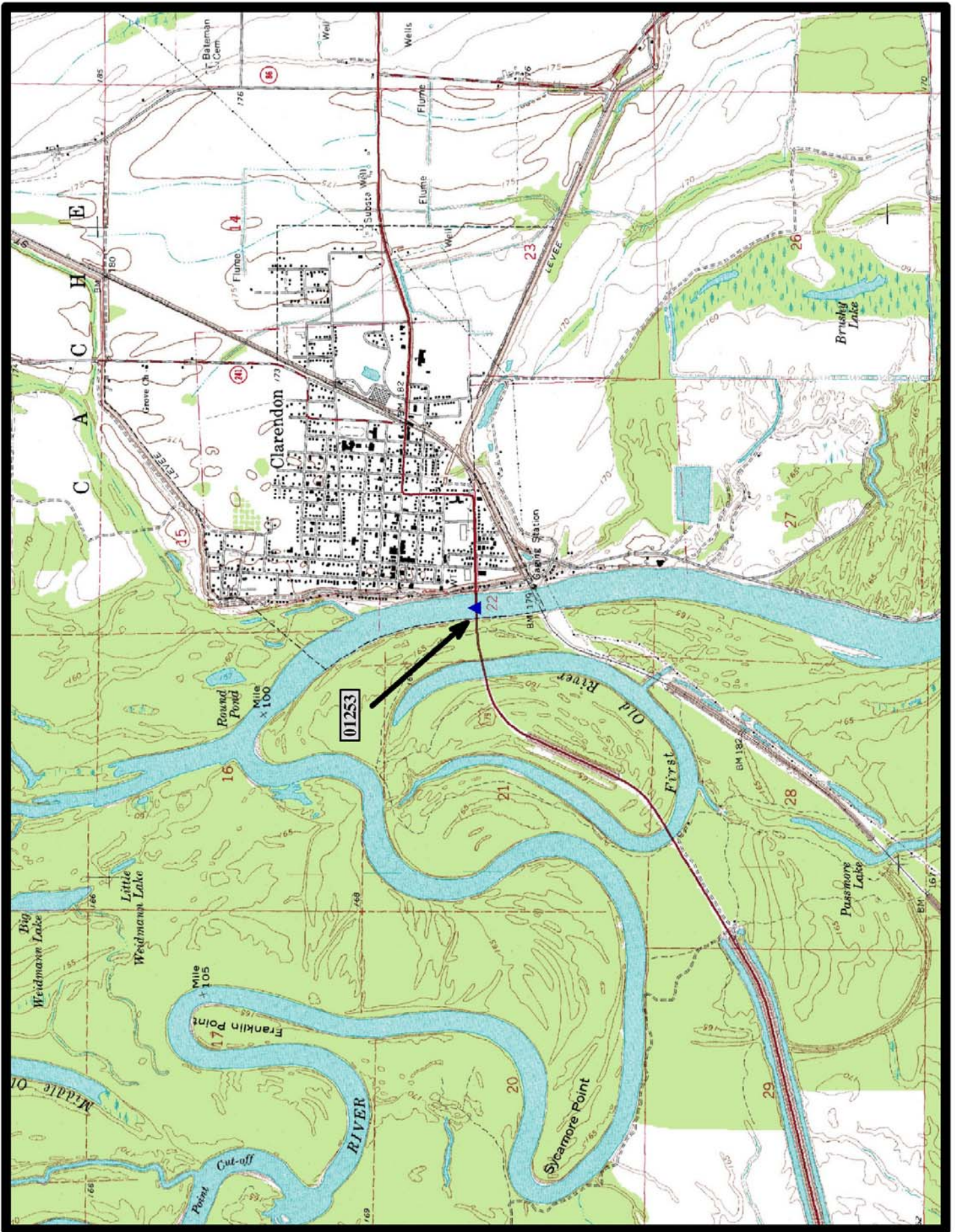


North

Newport 7.5 min. Quad



**HISTORIC BRIDGE #01253**  
**US HIGHWAY 79**  
**MONROE COUNTY**  
**DOUBLE ARCH THRU TRUSS**  
**CROSSES - WHITE RIVER**  
**DATE OF CONSTRUCTION – 1931**  
**BUILDER - AUSTIN BRIDGE COMPANY, DALLAS, TX**  
**HISTORIC BRIDGE INVENTORY DATE - 1987**  
**SHPO NUMBER – MO0058**  
**HAER NUMBER - AR-49**  
**DATE LISTED ON NATIONAL REGISTER - 11/1/1984**  
**LAT./LONG. 34:41:19.57, -91:18:59.13**



North

Clarendon 7.5 min. Quad